

Belt Packs • Rollers • Backpacks • Shoulder Bags • Modular Belt Systems



Photojournalist Daniel Beltra shooting out of a helicopter in Antarctica using a Speed Racer belt pack.

Photo: Gavin Newman



Photos: Alvin Jornada



Scott Varley /
Courtesy of Scott Varley



Andy Mettler /
Courtesy of Swiss-Image GmbH



Al Bello /
Photo Courtesy of Al Bello



Matt Brandon /
Photo: Keith Talley



Glenn Guan /
Photo: Apai from Utusan Malaysia



Eli Pitta /
Photo: Sherman Chu



Deanne Fitzmaurice /
Photo: Alvin Jornada



John Mabanglo and Darren Carroll /
Photo: Alvin Jornada



Bill Clark /
Photo: Doug Graham



Fernando E. Motta /
Photo: Robert J Cijntjea



Doug Murdoch /
Photo In Eok Yang



Bert Hanashiro /
Photo: Jack Gruber



Photo Courtesy of Vince Laforet

Rollers

The Airport Roller Series

- Security cable & lock tethers equipment
- Main compartment combination lock
- Front stretch pocket holds laptop
- ID plate with unique serial number



Airport Airstream™

Key Features:

- International and USA airline carry-on size
- Holds up to a 400 mm f2.8 lens

Specifications:

- ID: 13.5" W x 15.5" H x 6.5-7.5" D;
34 x 39.5 x 16.5 cm

- OD: 14" W x 17.5" H x 8" D; 36 x 44.5 x 20.5 cm

Weight: 9-10.5 lbs; 4.1-4.8 kgs



Airport International™ V2.0

Key Features:

- International and USA airline carry-on size
- Holds up to a 500mm f4 lens

Specifications:

- 13" W x 18.5" H x 6.5-7.5" D;
33 x 47 x 16.5-19 cm

- OD: 14" W x 21" H x 8" D; 36 x 53 x 20 cm

Weight: 9.5-11.5 lbs; 4.3-5.2 kg



Airport Security™ V2.0

Key Features:

- USA airline carry on size
- Holds up to a 600mm f4 lens

Specifications:

- ID: 13" W x 21" H x 7-8" D;
33 x 53 x 18-20 cm

- OD: 14" W x 22" H x 9" D; 35.5 x 56 x 23 cm

Weight: 12-14 lbs; 5.4-6.4 kgs

Rollers	p.5
Shoulder Bags	p.6
Backpacks	p.7,8
Digital Holsters	p.9
Multimedia Wired Up	p.10, 11
Belt Packs	p.12
Tripods/Monopods	p.12
Laptop Cases	p.13
Rain Covers	p.13
Modular Components	p.14,15
Skin Components	p.16
Accessories	p.17

The Urban Disguise Series

- Do not look like “traditional” camera bags
- Softer, more pliable and forms to body



Urban Disguise® 10

Key Features:

- Holds lenses or small DSLR
- Compatible with Pro Speed Belt

Specifications:

- ID: 6" W x 7.25" H x 4.25" D; 15 x 18.5 x 10.5 cm
- OD: 6.75" W x 8" H x 4.375" D; 17 x 20 x 11 cm

Weight: 12 oz–1 lb 4 oz; 340–567 g



Urban Disguise® 20

Key Features:

- Holds DSLR with standard lenses
- Compatible with Pro Speed Belt

Specifications:

- ID: 8" W x 8.25" H x 4.25" D; 20 x 21 x 10.5 cm
- OD: 8.75" W x 9" H x 4.375" D; 22 x 23 x 11 cm

Weight: 1 lb 2 oz–1 lb 12 oz; 510–794 g



Urban Disguise® 30

Key Features:

- Holds 70-200 2.8 (not attached to body)
- Holds DSLR with medium size lenses attached

Specifications:

- ID: 9.25" W x 10.25" H x 4.25" D; 23.5 x 26 x 10.5 cm
- OD: 10" W x 11" H x 4.375" D; 25.5 x 28 x 11 cm

Weight: 1 lb 8 oz–2 lbs 4 oz; 680–1021 g



Urban Disguise® 35

Key Features:

- Holds DSLR with a 70-200 2.8 lens
- Carries a10–13.3" laptop

Specifications:

- ID: 10" L x 13.25" H x 4.25 - 6" D (25.5 x 33.5 x 11cm)
- OD: 10.5" L x 13.5" H x 6" D (26.5 x 34.5 x 15 cm)

Laptop Dimensions:

- 10" L x 13.5" H x 1.5" D (25.5 x 33.5 x 4 cm)

Weight: 1 lb 8 oz - 2 lbs 6 oz; 1200 - 1400 grams

Urban Disguise® 40

Key Features:

- Carries multiple lenses and two DSLRs
- Largest size that only carries camera gear

Specifications:

- ID: 13.25" W x 10.25" H x 4.25" D; 34 x 26 x 10.5 cm
- OD: 14" W x 11" H x 4.375" D; 35.5 x 28 x 11 cm

Weight: 2 lbs 3 oz–3 lbs 2 oz; 992–1418 g



Urban Disguise® 50

Key Features:

- Carries up to a 15.4"laptop with gear
- Slides onto extended handle of rollers

Specifications:

- ID: 14.25" W x 10.25" H x 4.25" D; 36 x 26 x 10.5 cm
- OD: 15" W x 11" H x 6" D; 38 x 28 x 15 cm

Laptop Dimensions:

- 14.25" W x 10.25" H x 1.5" D; 36 x 26 x 4 cm

Weight: 2 lbs 10 oz–3lbs 10 oz; 1191–1644 g



Urban Disguise® 60

Key Features:

- Carries up to a 17" laptop with gear
- Wear it like a backpack with the optional Shoulder Harness

Specifications:

- ID: 16" W x 11.25" H x 4.25" D; 40.5 x 28.5 x 10.5 cm
- OD: 16.5" W x 12" H x 6" D; 42 x 30.5 x 15 cm

Laptop Dimensions:

- 16" WL x 11.25" H x 1.5" D; 40.5 x 28.5 x 4 cm

Weight: 2 lbs 15 oz–3 lbs 15 oz; 1332–1786 g



Urban Disguise® 70

Key Features:

- Holds 2 regular or pro size DSLRs with lenses attached
- Holds 70-200 f2.8 attached to pro size DSLR body

Specifications:

- ID: 14.5" W x 6.5" D x 12.25" H (37 x 16.5 x 31 cm)
- OD: 15" W x 7.5" D x 12.5" H (38 x 19 x 32 cm)

Weight: 4lbs. / 1.8kg



The Airport Backpack Series

- Designed specifically for all types of travel
- Rectangular shape maximizes gear capacity

- Quick access laptop pocket that folds flat
- Security cable and lock included



Airport Antidote® V2.0

Key Features:

- Carries up to 400mm f2.8 lens
- Includes 15.4" laptop case
- Fits into overhead of small planes

Specifications:

- ID: 11" W x 15.75" H x 6.5" D; 28 x 40 x 16.5 cm
- OD: 11.75" W x 17" H x 7"; 30 x 43 x 18 cm (with laptop case inserted: 8" D; 20.5 cm)

Laptop Case ID:

- 11" W x 14.375" H x 1.75" D; 28 x 36.5 x 4.5 cm

Holds up to a 15" laptop.

Weight: 3–4.4 lbs; 1.4–2 kg



Airport Addicted® V2.0

Key Features:

- Carries up to 600mm f4 lens
- Meets international carry-on size with laptop case removed
- Free 15.4" laptop case

Specifications:

- ID: 13.5" W x 20" H x 6.5" D; 34.5 x 50.5 x 16.5 cm
- OD: 14" W x 21" H x 8" D; 35.5 x 53.5 x 20.5 cm

Laptop Case ID:

- 13.75" W x 11.75" H x 2" D; 35 x 30 x 5 cm

Weight: 4.2–6.5 lbs; 1.9–3 kg



Airport Ultralight™ V2.5

Key Features:

- Fits in the overhead bins of small planes.
- Light but comfortable harness system.

Specifications:

- ID: 10.5" x 6.25" x 16.5", 26.5 cm x 16 cm x 42 cm
- OD: 11" x 7" x 17.5", 28 cm x 18 cm x 44.5 cm

Weight: 3.4 lbs, 1.5 kg



Airport Acceleration® V2.0

Key Features:

- Carries up to 500mm f4 lens
- Free 15.4" laptop case
- Meets international carry-on size

Specifications:

- ID: 12.375" W x 17.75" H x 6.75" D; 31.5 x 45 x 17 cm
- OD: 13" W x 18.5" H x 7" D; 33 x 47 x 18 cm

(with laptop case inserted: 9" D; 22.5 cm)

Laptop Case ID:

- 11" W x 14.375" H x 1.75" D; 28 x 36.5 x 4.5 cm

Holds up to a 17" laptop.

Weight: 3 lbs 5oz–7 lbs; 1508–3175 g



Airport TakeOff™

Key Features:

- INTERNATIONAL and USA domestic carry on size
- Quickly deployable/concealable backpack straps

Specifications:

- ID: 13" x 6.5" x 18.5", 33 cm x 16.5 cm x 47 cm
- OD: 14" x 8" x 21", 35.5 cm x 22 cm x 53 cm

Weight: 10.4Lbs / 4.7kg

The StreetWalker Series

- Designed for urban environments
- Super lightweight, narrow profile
- Holds tripods and monopods
- Unisex harness design

StreetWalker™

Key Features:

- Holds a regular size DSLR with lens attached
- Accommodates up to 70-200 2.8 lens

Specifications:

- ID: 8.5" W x 16" H x 5.5" D; 22 x 41 x 14 cm
 - OD: 9.5" W x 17" H x 6" D; 24 x 43 x 15 cm
- Weight:** 2 lbs – 2.8 lbs (0.9kg – 1.3 kg)

StreetWalker™ Pro

Key Features:

- Holds a pro size DSLR with 70-200 2.8
- Can carry a 400 2.8 with pro DSLR attached

Specifications:

- ID: 9.5" W x 16.5" H x 7" D; 24 x 42 18 cm
 - OD: 10" W x 17.5" H x 7.5" D; 25 x 45 x 19 cm
- Weight:** 2.6-3.4 lbs; 1.2-1.5 kg

StreetWalker™ HardDrive

Key Features:

- Holds a regular or pro size DSLR with lens
- Carries most 15" laptops

Specifications:

- ID: 11" W x 18" H x 6-7" D; 28 x 46 x 15-18 cm
 - OD: 11.5" W x 19" H x 8.5" D; 29 x 49 x 22 cm
- Weight:** 3.8-4.6 lbs; 1.7-2.1 kg

- **Speciality Backpacks:** Three backpacks with unique functionality



Shape Shifter™

Key Features:

- Expands and contracts in size
- Lightweight construction
- Compatible with Pro Speed Belt

Specifications:

- ID: 10.5" W x 17" H x 6.5" D; 26.5 x 43 x 16.5 cm
 - OD: 11" W x 18" H x 7" D; 28 x 46 x 18 cm
- Weight:** 2 lbs 2 oz-3.4 lbs; 1-1.5 kg



Glass Taxi™

Key Features:

- Holds 70-200 mm f2.8 with body attached
- Holds up to 500mm f4 lens
- Can be used as a backpack or shoulder bag

Specifications:

- ID: 8.25" W x 16.25" H x 8" D; 21 x 41.5 x 20 cm
 - OD: 8.5" W x 17" H x 9.5" D; 22 x 43 x 24 cm
- Weight:** 2 lbs-3 lbs 11 oz; 440-1366 g



Rotation 360°

Key Features:

- Belt pack rotates to front of body while backpack is being worn
- Specifically designed for access to photo equipment without taking the backpack off

Specifications:

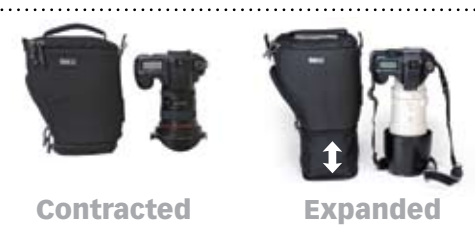
- Backpack: 11" W x 19.5" H x 9.5" D; 28 x 50 x 24cm
- Upper Interior Compartment: 9.5" W x 9.5" H x 6.5" D; 24 x 24 x 16.5 cm
- Beltpack: 11" W x 7.5" H x 6" D; 28 x 19 x 15 cm
- Interior of Beltpack: 9.75" W x 6.5" H x 5" D; 25 x 16.5 x 13 cm

Weight:

Backpack with beltpack: 5.5-7.5 lbs; 2.5-3.4 kg
Beltpack separately: 1.5-2.2 lbs; 0.7-1 kg

The Digital Holster Series

- "Pop Down" expands capacity for lens hoods or telephoto lenses
- Contemporary design for digital SLRs.
- Built in belt attachment



Digital Holster™ 10

Key Features:

- Carries a small DSLR with standard zoom lens attached.

Specifications:

- ID: 6.25" W x 3.5" H x 6-8.25" D; 15.9 x 8.9 x 15.2-21 cm
- OD: 6.75" W x 4.5" H x 7.25-10.25" D; 17.1 x 11.4 x 18.4-26 cm

Weight: 12 oz; 340 g



David duChemin /
Photo: Henri Straforelli



Digital Holster™ 20

Key Features:

- Carries a regular size DSLR with standard or wide zoom lens attached.

Specifications:

- ID: 7.25" W x 4.5" H x 8-11.5" D; 18.4 x 11.4 x 20.3 - 29.2 cm
- OD: 8" W x 5" H x 9.5-12.5" D; 20.3 x 17.1 x 24.1-31.8 cm

Weight: 15 oz; 425 g



Digital Holster™ 30

Key Features:

- Carries a regular size DSLR with 70-200 2.8 lens attached.

Specifications:

- ID: 7.25" W x 4.5" H x 11.25-14.25" D; 19.1 x 11.4 x 28.6-36.2 cm
- 8" W x 5" H x 13-16" D; 20.3 x 12.7 x 33-40.6 cm

Weight: 16 oz; 454 g



Digital Holster™ 40

Key Features:

- Carries a pro size DSLR with standard or wide zoom lens attached.

Specifications:

- ID: 7.25" W x 6" H x 8-11.5" D; 18.4 x 15.2 x 20.3-29.2 cm
- 8" W x 6.75" H x 9.5-12.5" D; 20.3 x 17.1 x 24.1-31.8 cm

Weight: 16 oz; 454 g



Digital Holster™ 50

Key Features:

- Carries a pro size DSLR with 70-200 2.8 lens attached.

Specifications:

- ID: 7.25" W x 6" H x 11.25-14.25" D; 18.4 x 15.2 x 28.6-36.2 cm
- OD: 8" W x 6.75" H x 13-16" D; 20.3 x 17.1 x 33-44.6 cm

Weight: 1 lb 1 oz; 482 g

The Multimedia Wired Up Collection

- Storage solution for stills, audio, and video
- Quick access to multimedia equipment
- Cable ports built in for organization
- Innovative and feature rich bags



Multimedia Wired Up™ 10

Key Features:

- Fits multimedia DSLR camera with basic zoom attached
- Accommodates 24-70 f2.8, 16-35 f2.8, or similar size lenses
- Cable ports throughout to manage cords
- “Mic Hands” hold microphones in various positions

Specifications:

- ID: 4.5” W x 12” L x 7” H (11.43 x 30.48 x 17.78 cm)
- OD: 7.25” W x 12.5” L x 8.5” H (18.42 x 31.75 x 21.59 cm)

Weight: 2 – 3.2lbs (0.9 – 1.5kg)



Multimedia Wired Up™ 20

Key Features:

- Fits multimedia DSLR camera with basic zoom attached
- Accommodates up to a 70-200 f2.8, detached from DSLR
- Cable ports throughout to manage cords
- “Mic Hands” hold microphones in various positions

Specifications:

- ID: 4.5” W x 12” L x 9.5” H (11.43 x 30.48 x 24.13 cm)
- OD: 7.5” W x 12.5” L x 10” H (19.05 x 31.75 x 25.4 cm)

Weight: 2.2 – 3.6lbs (1 – 1.6kg)



Multimedia Big Audio

Key Features:

- Accommodates mobile audio recorders
- Cable ports throughout to manage cords
- “Full View” design allows easy viewing of audio levels
- Magnetic “Quick Tab” rapidly closes bag without zipping it shut
- Compatible with Think Tank belt systems
- Front accessory pocket for a small microphone
- “Mic Hand” holds a shotgun mic horizontally

Specifications:

- ID: 1.75” W x 7” L x 10.5” H (4.45 x 17.78 x 26.67 cm)
- OD: 2” W x 8” L x 10.75” H (5.08 x 20.32 x 27.31 cm)

Weight: 11 oz (311.84 g)



Multimedia Wireless Mic Kit

Key Features:

- Accommodates two lavalier mic kits
- Cable ports throughout to manage cords
- “Full View” design for hands-free viewing of audio levels
- Magnetic “Quick Tab” closes bag quickly
- Built in “Mic Hand” to hold a larger microphone
- Front accessory pocket

Specifications:

- ID: 3” W x 7” L x 6.5” H (7.62 x 17.78 x 16.51 cm)
- OD: 3.5” W x 7.5” L x 7.5” H (8.89 x 19.05 x 19.05 cm)

Weight: 10.25 oz (290.58 g)



Multimedia Audio Recorder

Key Features:

- Accommodates handheld audio recorders
- Cable ports for routing wires into the bag
- “Full View” design allows easy viewing of audio levels
- Magnetic “Quick Tab” rapidly closes bag without zipping it shut

Specifications:

- ID: 1.75” W x 4.5” L x 8” H (4.45 x 11.43 x 20.32 cm)
- OD: 2” W x 5” L x 8.25” H (5.08 x 12.7 x 20.96 cm)

Weight: 6.5 oz (184.27 g)



Multimedia Mic Drop In

Key Features:

- Accommodates most microphone sizes with windscreen attached
- Designed to fit up to a 16” shotgun mic
- Pop Down feature allows 4” vertical expansion
- Quick Tab loop on side holds a coiled mic cable

Specifications:

- ID: 3.5” Diam.; 7” – 11” H (8.89 cm; 17.78 – 27.94 cm)
- OD: 4.5” Diam.; 8.5” – 11.25” H (11.43 cm; 21.59 – 28.58 cm)

Weight: 5.75 oz (163 g)



Photo: Alvin Jornada

The Belt Pack Series

- Designed for digital photo equipment.
- Modular components attach to belt.
- Removable interior padded liner.



Change Up™

Key Features:

- Changes form as a belt pack, shoulder bag, or even supported with a chest harness system

Specifications:

- ID: 10.5" W x 9" H x 4" D; 27 x 23 x 10 cm
- OD: 11" W x 9.5" H x 4.375" D; 28 x 24 x 11 cm
- Weight: 1 lbs 9 oz - 2 lbs 6 oz; 715-1090 g



Speed Demon™

Key Features:

- Large waistbelt for comfort
- Modular components can be attached

Specifications:

- ID: 10" W x 6.7" H x 4.5" D; 25 x 17 x 11.5 cm
- OD: 10.5" W x 7.5" H x 7" D; 27 x 19 x 18 cm
- Weight: 1 lb 13 oz - 2 lbs 12 oz; 0.82 - 1.25 kg



Speed Freak™

Key Features:

- Holds 70-200mm f2.8 lens separately
- Modular components can be attached

Specifications:

- ID: 10.75" W x 9.25" H x 4.5" D; 27 x 23.5 x 11.5 cm
- OD: 11.75" W x 9.75" H x 7" D; 30 x 24.5 x 18 cm
- Weight: 1 lb 15 oz - 3 lbs 3 oz; 0.88 - 1.45 kg



Speed Racer™

Key Features:

- Holds Pro size DSLR with lens attached
- Holds 70-200mm f2.8 lens
- Modular components can be attached

Specifications:

- ID: 11" W x 10.25" H x 6.25" D; 28 x 26 x 16 cm
- OD: 12.5" W x 10.75" H x 8.75" D; 32 x 27 x 22 cm
- Weight: 2 lbs 3 oz - 3 lbs 10 oz; 0.99 - 1.64 kg



Bazooka™

Key Features:

- Expands 15" in length
- Attaches to some rollers and backpacks

Specifications:

- ID: Adjusts from 15-30" (40-79 cm) long, and up to 5" (13 cm) in diameter.
- OD: 16-31" L x 6" W x 6" H; (40-79 x 15 x .15 cm)
- Weight: 13 oz; 0.37 kg



Big Bazooka™

Key Features:

- Fully padded and expandable
- For larger diameter tripods

Specifications:

- Min. Dim.: Inner: 16.5" H x 6" Diam.; 42 x 15.2 cm
Outer: 17" H x 7.25" Diam.; 43.2 x 18.4 cm
- Max. Dim.: Inner: 30.5" H x 6" Diam.; 77.5 x 15.2 cm
Outer: 32" H x 7.25" Diam.; 81.3 x 18.4 cm
- Weight: 1 lb 7 oz; 656 g



Humongous Bazooka™

Key Features:

- Holds large tripods and heads
- Holds one or more light stands

Specifications:

- Min. Dim.: Inner: 22" H x 6.75" Diam.; 55.9 x 17 cm
Outer: 22.5" H x 7.25" Diam.; 57.2 x 18.4 cm
- Max. Dim.: Inner: 39.5" H x 6.75" Diam.; 100 x 17 cm
Outer: 41" H x 7.5" Diam.; 104 x 19 cm
- Weight: 1 lb. 14 oz; 858 g



Big Stick™

Key Features:

- Holds monopod up to 27" in length and 2.5" in diameter

Specifications:

- OD: 34" L x 4" W x .25" H; 18 x 7 x 16.5 cm
- Expanded: 15" L x 4-7" W; 38 x 10-18 cm
- Weight: 6 oz; 170 g



Airport Check In™

Key Features:

- Holds up to 17" laptop
- Attaches to rollers

Specifications:

- ID: (Front Compartment): 15.5" W x 13" H x 2" D; 39.5 x 33 x 5 cm
- ID(Computer Area): 15.5" W x 12.75" H x 2" D; 39.5 x 32.5 x 5 cm
- OD: 16" W x 13.375" H x 6.25" D; 41 x 34 x 16 cm)
- Weight: 2 lbs-3 lbs 15 oz; 930-1800 g



Urban Disguise® 50

Key Features:

- Carries up to a 15.4" laptop with gear
- Slides onto extended handle of rollers

Specifications:

- ID: 14.25" W x 10.25" H x 4.25" D; 36 x 26 x 10.5 cm
- OD: 15" W x 11" H x 6" D; 38 x 28 x 15 cm
- Laptop Dimensions: 14.25" W x 10.25" H x 1.5" D; 36 x 26 x 4 cm
- Weight: 2 lbs 10 oz-3lbs 10 oz; 1191-1644 g



Urban Disguise® 60

Key Features:

- Carries up to a 17" laptop with gear
- Wear it like a backpack with the optional Shoulder Harness

Specifications:

- ID: 16" W x 11.25" H x 4.25" D; 40.5 x 28.5 x 10.5 cm
- OD: 16.5" W x 12" H x 6" D; 42 x 30.5 x 15 cm
- Laptop Dimensions: 16" W x 11.25" H x 1.5" D; 40.5 x 28.5 x 4 cm
- Weight: 2 lbs 15 oz-3 lbs 15 oz; 1332-1786 g



Artificial Intelligence™ 15 V2.0

Key Features:

- Holds up to 15.4" laptops
- Deluxe front pocket organizer

Specifications:

- 11.5" W x 15.25" H x 1.5" D; 28.5 x 39 x 4 cm
- Weight: 1 lb 8 oz; 0.68 kg



Artificial Intelligence™ 17 V2.0

Key Features:

- Holds up to 17" laptops
- Deluxe front pocket organizer

Specifications:

- 11.625" W x 16.375" H x 2" D; 29.5 x 41.5 x 5 cm
- Weight: 1 lb 10 oz; 0.74 kg

Rain Covers



Hydrophobia® 70-200

Key Features:

- Works with lenses up to 70-200mm f2.8
- Built in camera strap

Specifications:

- 7.5" W x 17" L x 5.5" D; 19 x 43 x 14 cm
- Weight: 9.6 oz; 272 g (rain cover only)



Hydrophobia® Flash 70-200

Key Features:

- Works with lenses up to 70-200mm f2.8
- Built in pop up section for flash
- Built in camera strap

Specifications:

- 7.5" W x 17" L x 5.5" D; 19 x 43 x 14 cm
- Weight: 13 oz; 367 g (rain cover only)



Hydrophobia® 300-600

Key Features:

- For 300mm f2.8 to 600mm f4 lenses
- Mounts on the lens hood for deployment

Specifications:

- 25" Long x 8.5" in Diam.; 63.5 x 22 cm
- 600mm Ext.: 7.75" Long x 8.5" Diam.; 20 x 22 cm
- Weight: 10.5 oz; 299 g (rain cover only)

The Modular Belt System

- Modular components “rotate” or “lock” on the belt
- The fastest access to your gear while actively shooting



Modular Set™ (belt not included)

Products Included In Box

- Large Lens Drop In*
- Lens Changer 35*
- Lens Changer 50*
- LC 75 Pop Down*
- Lightning Fast*
- Speed Changer*

Pro Speed Belt™ V2.0 (sold separately)

Compatible With: All Modular and Skin components

Specifications:

- Small - Medium: 27" – 34" (68 – 85 cm)
- Medium - Large: 32" – 42" (81 – 106 cm)
- Large: 38" – 48" (96 – 122 cm)
- Extra Large: 44" – 64" (112 – 162 cm)

Lens Changer™ 15

Key Features:

- Holds small lenses, such as a 50mm or 85mm with hood

Specifications:

- ID: 4" Diameter x 7" H; 10 x 18 cm
- OD: 4.25" Diameter x 7" H; 11 x 18 cm

Weight: 4 oz; 113 g

Lens Changer™ 25

Key Features:

- Holds zoom lenses, such as 28-135 mm or 28-200 mm with hood

Specifications:

- ID: 4" Diameter x 7" H; 10 x 18 cm
- OD: 4.25" Diameter x 7" H; 11 x 18 cm

Weight: 5 oz; 113 g



*Lens Changer™ 35

Key Features:

- Holds larger lenses, such as 24-70mm f2.8 or 100 Macro with hood

Specifications:

- ID: 4" Diameter x 9 H; 10 x 23 cm
- OD: 4.25" Diameter x 9" H; 10.8 - 23 cm

Weight: 6 oz; 170 g



*Lens Changer™ 50

Key Features:

- Holds wide angle lenses, such as a 16-35mm f2.8 with hood

Specifications:

- ID: 4.5" Diameter x 7" H; 11.5 x 18 cm
- OD: 4.75" Diameter x 7" H; 12 x 18 cm

Weight: 5 oz; 142 g



*LC 75 Pop Down™

Key Features:

- Holds 70-200mm f2.8 with pop-down feature for hood

Specifications:

- ID: 10.75-14.5" H x 4.5" Dia.; 27-37 x 11.5 cm
- OD: 12-15" H x 4.75" Dia.; 30.5-38 x 12 cm

Weight: 8 oz; 233 g



Lens Changer™ 300

Key Features:

- Holds 300mm f2.8 and similarly sized lenses

Specifications:

- ID: 6.25" W x 12.5" H x 6" D; 16 x 32 x 15.5 cm
- OD: 6.5" W x 13" H x 6.25" D; 16.5 x 33 x 16 cm

Weight: 8 oz; 233 g



Lens Drop In™

Key Features:

- For quickly changing teleconverters and small lenses

Specifications:

- ID: 4" Top Diameter x 6" H; 10 x 15 cm
- OD: 4.5" Diameter x 6.5" H; 11.5 x 16.5 cm

Weight: 4 oz; 113 g



*Large Lens Drop In™

Key Features:

- Fast access to lenses up to wide angle

Specifications:

- ID: 5" Top Diameter x 7" H; 12.7 x 17.8 cm
- OD: 5.75" Top Diameter x 7.25" H; 4.6 x 18.41 cm

Weight: 5 oz; 141.7 g



Whip It Out™

Key Features:

- Holds 70-200 2.8 upside down for fast retrieval

Specifications:

- ID: 3.25" Diameter x 8.5" H; 8.2 x 22 cm
- OD: 3.5" Diameter x 8.5" H; 9 x 22 cm

Weight: 6 oz; 170 g



*Speed Changer™

Key Features:

- Multi-use utility bag for lenses, batteries and accessories

Specifications:

- ID: 7" W x 6" H x 3.25" D; 18 x 15 x 8 cm
- OD: 7.5" W x 6.5" H x 4.5" D; 19 x 16.5 x 11.5 cm

Weight: 13 oz; 369 g



Trim Changer™

Key Features:

- Thin, 2.5" thick organizer stays close to body

Specifications:

- ID: 7" W x 6" H x 2.5" D; 18 x 15 x 6 cm
- OD: 7.5" W x 6.5" H x 2.75" D; 18 x 16.5 x 7 cm

Weight: 10.5 oz; 298 g



Chimp Cage™

Key Features:

- For DSLR body or other accessories

Specifications:

- ID: 6.5" W x 6.5" H x 3.5" D; 16.5 x 16.5 x 9 cm
- OD: 7.5" W x 7" H x 3.75" D; 19 x 18 x 9.5 cm

Weight: 11 oz; 312 g



*Lightning Fast™

Key Features:

- Holds SLR flash or other accessories

Specifications:

- ID: 3.5" W x 8" H x 2.5" D; 9 x 19.5 x 6.5 cm
- OD: 4" W x 8.25" H x 3" D; 10 x 21 x 7.5 cm

Weight: 6 oz; 170 g



R U Thirsty?™

Key Features:

- Water bottle and energy bar storage bag

Specifications:

- OD: 3.75" Diameter x 8.5" H; 9.5 x 21.5 cm

Weight: 2 oz; 57 g



Bum Bag™

Key Features:

- Belt pack slides onto Pro Speed Belt

Specifications:

- OD: 10.5" W x 6.5" H x 4" D; 27 x 16.5 x 10 cm

Weight: 7 oz; 198 g



Modular Pouch

Key Features:

- Accessory pouch attaches to belts or shoulder harness

Specifications:

- ID: 4.5" W x 6" H x 2" D; 11.5 x 15 x 5 cm
- OD: 4.5" W x 6.25" H x 3" D; 11.5 x 16 x 7.5 cm

Weight: 3.5 oz; 99 g



All The Other Stuff™

Specifications:

- ID: 4.5" W x 6" H x 2" D; 11.5 x 15 x 5 cm
- Front Pocket: 4.5" W x 4" H x 1" D; 11.5 x 2.5 x 10 cm
- OD: 4.5" W x 6.25" H x 3" D; 11.5 x 16 x 7.5 cm

The Skin Components System

- Unpadded, highly compressible pouches
- Hook and Loop "sound" can be turned on or off



Skin Set™ (belt not included)

Products Included In Box

- Skin 50*
- Skin 75 Pop Down*
- Skin Double Wide*
- Skin Strobe*
- Skin Chimp Cage*



Thin Skin Belt™ V2.0 (sold separately)

Key Features:

Webbing only, no padding belt

Specifications:

- Small - Medium - Large; for sizes: 27" - 42" (68 - 106cm)
- Large - Extra Large - XXL; for sizes: 38" - 64" (96 - 162cm)



*Skin™ 50

Key Features:

- Holds wide angle lenses, such as a 16-35mm f2.8 with hood

Specifications:

- ID: 5.25" W x 7" H x 3.25" D; 13.3 x 17.8 x 8.3 cm

Weight: 5 oz; 142 g



*Skin™ 75 Pop Down

Key Features:

- Holds 70-200mm f2.8 with pop-down feature for hood

Specifications:

- ID: 5.25" W x 9.75" H x 3.25" D; 13.3 x 24.8 x 8.3 cm

Weight: 7.75 oz; 220 g



*Skin™ Strobe

Key Features:

- Holds SLR flash or other accessories

Specifications:

- ID: 4" W x 9" H x 2.75" D; 10.2 x 22.9 x 7 cm

Weight: 4.25 oz; 120 g



*Skin™ Chimp Cage

Key Features:

- Holds DSLR or other accessories with pop-down feature

Specifications:

- ID: 7" W x 8" H x 3.25" D; 17.8 x 20.3 x 8.3 cm

Weight: 9.25 oz; 262 g



*Skin™ Double Wide

Key Features:

- Double sided for lenses such as 70-200 2.8 and 24-70 2.8

Specifications:

- ID: 10.25" W x 10" H x 3.75" D; 26 x 25.4 x 9.5 cm
- Each Pouch: 5.25" W x 10" H x 3.75" D; 13.3 x 25.4 x 9.5 cm

Weight: 10.5 oz; 299 g



Matt Brandon /
Photo: David duChemin

Belts and Harnesses

Pixel Racing Harness™ V2.0



- Supports belts
- Folded Dim. 8.5" x 2" x 3"; 22 x 5 x 8 cm

Steroid Speed Belt™ V2.0



- Heavier belt provides extra support
- S - M: 27" - 34"; 68 - 85cm
- M - L: 32" - 42"; 81 - 106cm
- L - XL: 38" - 48"; 96 - 122cm
- XL - XXL: 44" - 64"; 112 - 162cm

Belly Dancer™ Harness



- Mounts on front of body
- Belt Size: 27-64"; 69-162cm
- Weight: 12.8 oz; 363 g

Shoulder Harness



- Convert briefcases and shoulder bags into backpacks

Digital Holster™ Harness



- Attaches bag to chest for hands-free access

Security

Security Tag



- Unique serial ID number

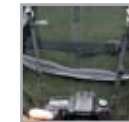
Lock It Up™



- Combination retractable wire lock

Straps

Camera Straps



- Lightweight and thin
- Length: 1" x 22"; 2.5 x 56 cm
- Weight: 2oz; 57 g

Camera Support Straps



- Mounts DSLR on front of back packs
- Length: 4.5-11"; 12-28 cm
- Weight: 2.5 oz; 71 g

Curved Comfort™



- Shoulder strap
- Dimensions: 11.5" L x 3" W x 1" D; 29 x 8 x 2.5 cm
- Weight: 6.5oz; 178 g

Dividers

AS Low Divider Set



- Airport Security accessory
- Low Dividers provide 2" on top
- AI 15 & 17 laptop cases fit inside

AI Low Divider Set



- Airport International accessory
- Low Dividers provide 2" on top
- AI 15 laptop cases fit on top

AA Low Divider Set



- Airport Airstream accessory
- Low Dividers provide 2" on top
- Allows 15" or smaller lap tops to fit inside

Cable Management

Cable Management™ 10



- OD: 7.5" W x 3.75" H x 2.25" D; 9 x 9.5 x 6 cm

Cable Management™ 50



- OD: 14.5" W x 11.25" H x 2" D; 37 x 28.5 x 5 cm
- Weight: 8.5 oz; 240 g

Cable Mangement - cont.

Cable Management™ 20



- OD: 7.0" L x 2.25" W x 7.0" H (18 x 6 x 18 cm)

Cable Management™ 30



- OD: 8.5" L x 9.0" W x 3.5" H (21.6 x 22.9 x 8.90 cm)
- Weight: 8.5 oz; 240 g

Memory Cards

Pixel Pocket Rocket™



- Holds 10 CF cards
- Folded and Closed Dim: 4.5" L x 2.5" W x .5" H (11.5 x 6.5 x 1.5 cm)

Pee Wee Pocket Rocket™



- Holds 4 CF and 3 SD cards
- OD: 4.75" W x 2.75" H x 0.5" D; (12.1 x 7 x 1.3 cm)
- Weight: 1 oz; 31g

Monitor

Pixel Sunscreen™ V2.0



- Pop-up sun shield
- ID: 15 x 12.5 x .5"; 38 x 32 x 1.3 cm

Design Philosophy

Think Tank Photo designs camera bag solutions for working professionals. Our products are born from the collaborative effort of professional photographers and product designers, working together with a common goal - create the most inventive and effective solutions for any and all photographic situations. Think Tank Photo goes to great lengths in listening to our core customers and translating that feedback into everything we create.

The quality is in the details. We take great pride in knowing that our products can handle all types of situations that may occur during a photography assignment. Our philosophy is simple: our products should enhance and not distract from "capturing" the moment.

The greatest moments in history are captured only when the photographer is ready "Before the Moment," intuitively pressing the shutter before that "definitive moment" occurs. Our goal is to design inventive carrying solutions that help each photographer capture these moments.

For some companies, it is only about the product. For us, it is more: It is about supporting photographers doing their job. If we can design products that help professional photographers travel easier, take pictures faster, reduce impacts on their bodies, and organize their gear more efficiently, then we will have accomplished something beyond the bags themselves.



Skin Belt Silencer Feature



Multimedia Wired Up 10



Center Release Buckle



Shape Shifter & Airport Security V2.0

Belt Packs • Rollers • Backpacks • Shoulder Bags • Modular Belt Systems



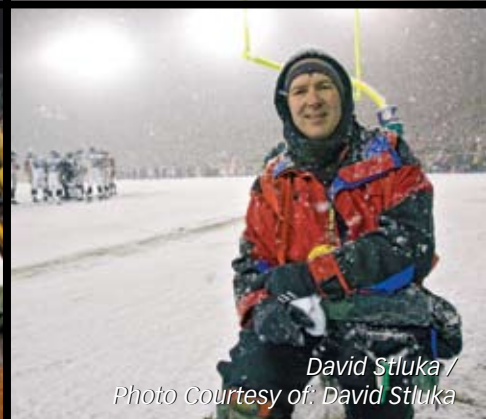
Tiffany Brown /
Photo: Isaac Brekken



Seth Gitner /
Photo: Josh Meltze



Brian Snyder and CJ Gunther /
Photo: Brita Meng Outzen



David Stluka /
Photo Courtesy of: David Stluka